

# MuWave® SharePoint QSX

MuWave® SharePoint QSX is a Quillix™ Server extension (QSX) module which provides integration with Microsoft® SharePoint. It is easy to install and configure, yet is extremely flexible enough to provide complete control of document storage, metadata settings, and document naming.

## REQUIREMENTS

- Quillix Server Document Capture Software version 4.2 or later
- Microsoft SharePoint Online or SharePoint 2013 (or higher)

## PART OF A COMPLETE SOLUTION

The true power of Quillix is released when it is combined with the entire suite of MuWave QSX modules. MuWave E-Mail Gateway, MuWave Forms Pro and MuWave Route can be combined into a powerful capture workflow solution, allowing you to capture documents from the web, convert them to hidden-text PDF's, and save them into your enterprise content management system.

## MORE INFORMATION AVAILABLE ONLINE AT WWW.UFCINC.COM



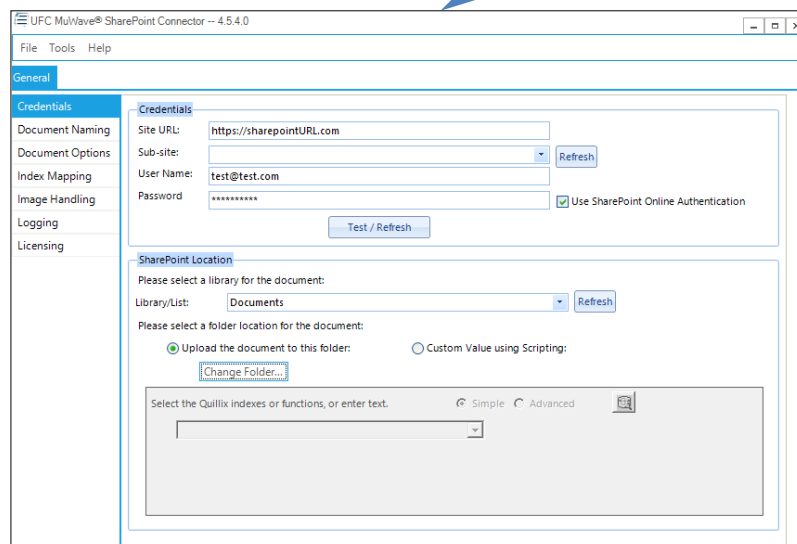
## KEY FEATURES INCLUDE:

- Automatic creation of a new document in the SharePoint Server library with an automatic filename you determine
- Compatible with both on premise Microsoft SharePoint Server and SharePoint Online (Office 365)
- Ability to dynamically assign document names, folders, and indexes using Quillix indexes or MuWave® scripts
- Options to handle duplicate file names by automatically applying a numeric suffix, overwriting the existing document, or sending the document/batch to exception
- Capability to check-in documents to SharePoint with comments
- Ability to combine all image files into industry standard multi-page TIFF format
- Advanced options and configuration through use of UFC's MuWave Script.
- Highly complementary with Quillix Workflows using UFC's other MuWave QSX modules

## EASY SETUP AND CONFIGURATION:

MuWave® SharePoint QSX is quickly and easily installed on a running Quillix server, and requires minimal configuration before it is production ready. It also provides options for expanded logging for testing or diagnostic purposes, as well the ability to backup, migrate or restore configuration by importing/exporting the configuration to an INI file.

[Click to see a larger image online](#)



Quillix and QSX are registered trademarks of Prevalent Software, Inc. MuWave and UFC are registered trademarks of User Friendly Consulting, Inc. All other trademarks used herein are the property of their respective owners. Copyright 2014 UFC, Inc. All Rights Reserved

UFC Inc. 67200 51st Street, Lawrence, MI 49064 - [www.ufcinc.com](http://www.ufcinc.com) - (248) 447-0100 [sales@ufcinc.com](mailto:sales@ufcinc.com)

